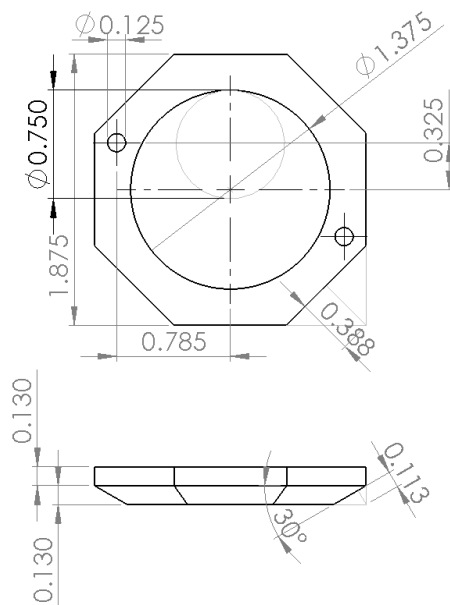
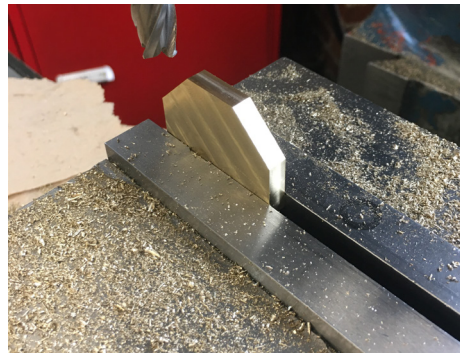
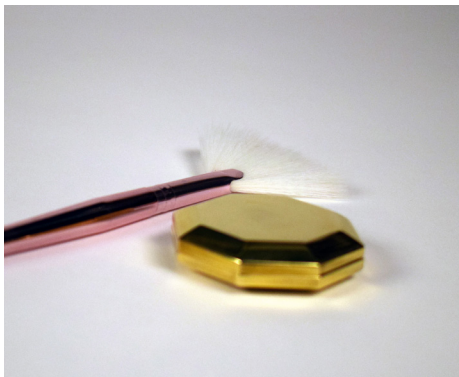
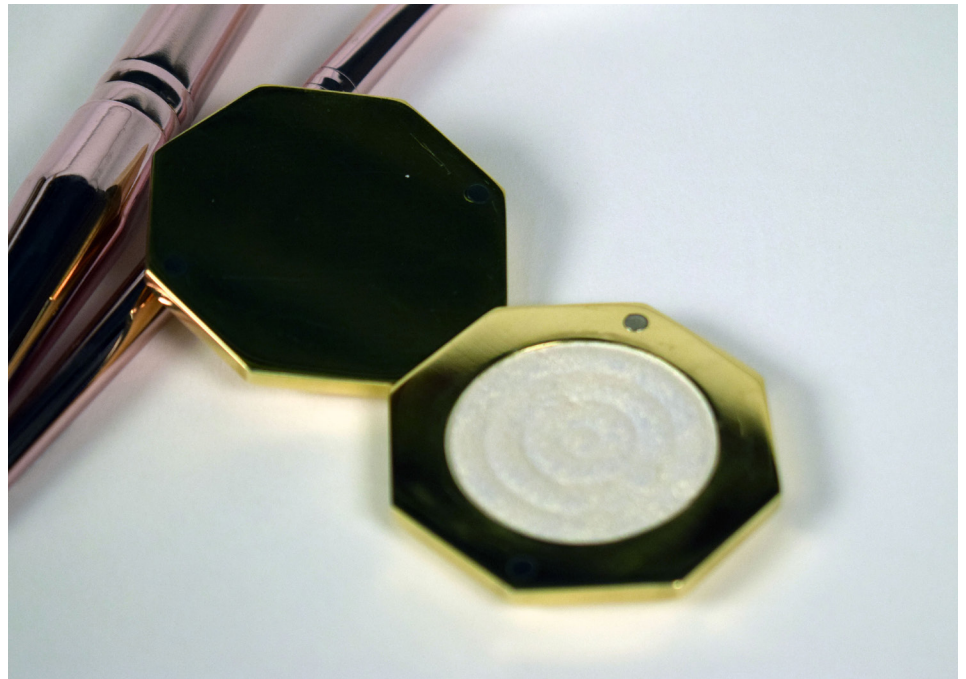


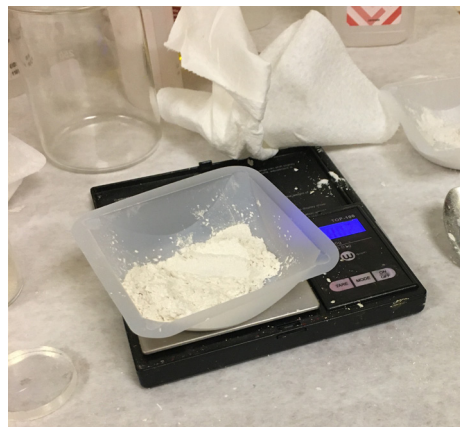
# ROYAL GEM

ROYAL GEM was borne out of my love of cosmetics packaging design. Its sleek and elegant geometric design pays homage to Old Hollywood, with an updated hinge-less closure design sure to catch the eye of modern consumers in search of luxury cosmetics.



I began my prototyping process in SolidWorks, creating a CAD model of the final product. Through a series of iterations, I arrived at the final design: an extruded octagon, with beveled sides reminiscent of a cut gem. I machined ROYAL GEM out of 360 Brass on a Bridgeport vertical mill, finishing the surface with various grits of sandpaper and a polishing wheel.

I formulated a duochrome gold and white highlighter with micas and a dimethicone base, then pressed the powder into the compact using a custom 3D-printed mold and an arbor press.



**liam j fay**

Candidate, BS in Product Design  
Stanford University School of Engineering  
(858) 999 4859  
liamfay@stanford.edu